

A HERBAL TONIC

CHORUS FROM "GUMBOLIMBO: A SONIC GEOGRAPHY OF BELIZE"
PHILIP BLACKBURN

PREMIERE: MARCH 16, 2007, WILD MUSIC A-GO-GO, SCIENCE MUSEUM OF MINNESOTA



ENSEMBLE

Soprano solo (Maria Jette)

5-50 speaking/singing chorus

10 chorus members double on 10 bamboo reed pipes

1 doubles on turtle shell rattle

6+ double on magnetic Zingers

1 doubles on Maya trumpet tree

NOTES

Performance instructions relate to the accompanying lists of 95 vascular plants found in the Belize rainforest in five languages: Common, Spanish, Creole, Maya, and Latin.

Pronounce them using your best abilities.

Names speak volumes. They describe the namer as much as the named. You can infer a thousand stories in their everyday poetry.

The Belize jungle is a pharmacy, a supermarket, and a home improvement center, depending on what you are looking for. There are no weeds in this ecology, everything supports the growth of everything else. If one plant is harmful, its neighbor will offer a cure. The bark of the Gumbolimbo tree is one of the most powerful bush remedies.

A Herbal Tonic brings together five naming systems or languages for the same list of plants. Are they really the same? What do they tell us about why different people go to the bush and what they find there? While we are jabbering away in different tongues, what is happening to the forest? What is the sound of an ethnobotanical Requiem?

1

Stand in a circle around the audience.

Throw Zingers in the air and catch them to sound like cicadas; sparsely at first, then more dense. DO NOT DROP!

After 45", (watch cue) in a loud stage whisper, Chorus members articulate the following Mayan names.

Divide Chorus into three; each group begins with Column 1, 2 or 3. Stay roughly together. Gaps in the list are treated as rests for that approximate duration.

On reaching the bottom of your first column, begin to process in a circle around the audience. Stop when you have reached your original spot.

Zinger players stop when the procession begins, and start any two columns of Mayan whispering.

All stop after going through once, and begin humming.

1 Bosh pol pimienta, Naba-cuc
-
-
-
Anál
Ku-xub, Shi-yau
On
-
Chin-chin-pol-ojo
Box haas
Ca-cal-tun
Pixoy
-
Chin-in, Zink-in
-
Lek, Luch
Mis xiv
Xcoch
Ku-che
Pasma
Mes-bel
Pu ja
Subin, Zubin
-
-
Hop-ya
-
Pom
Ix im
Ki bix
-
-

2 Cruxi
-
Anál
-
Sak-u-sol, Yax-nik
Amate
-
Mis
Chac-pom
Ya-ax-como-che
Pici, Pichi, Puta
Chaca
Hatz
Kakchiat'tsum
Rum-p'ok
-
Kayabim, An-mank
Shkot-k'wai
-
-
Ek-ch-can, Ok-pich
Ya-ax-ak
Ix-ta-pul
-
Schma-mo-cal
-
Pa-sak
-
Put
-
Xiv-yak-tun-ich, Tye-pu
-
-

3 Cuyche
Xucul
Pasma, Kehal-pim, Dungya
Sac-te-much, Klaush-pim
-
-
Sink-in
Chal-che
Ix-chal-che
U-tu-it
Pa-kam
-
Pay-che
-
-
Zutz pakal
Bukut
-
Pa-al, Toom-pa'ap
-
Pasma wa-xi-uil
Cho-otz, Po-hor
Xmutz
Cot-a-cam, Xryay-ach-bak-shul
Eremuil
-
Ix-tot
-
-
-
Xix-el-ba
Bul-che, Ya-me-bu

Starting at the bottom of your first column, walk in a circle around the audience, stop at your original spot.

2

Chorus: Hum any pitch, mf, low in your range, change pitch with each breath, do not seek to harmonize.

Two soloists from the Chorus, standing opposite each other across the circle:

Soloist A: Speak the Common names in order, loud and clear, do not wait for Creole responses.

Soloist B: Shout the corresponding Creole names in the gaps between the corresponding Common names.

<u>Common</u>	<u>Creole</u>		
Allspice	-	Fiddlewood, Walking Lady	<i>Blue blossom</i>
Almond	<i>Hammon</i>	Fig Tree	-
Aloe vera.....	<i>Sink-am-bible</i>	Ginger	-
Amaranth, Pig weed.....	<i>Calaloo</i>	Give and Take	-
Anál	-	Grande Betty	-
Annatto	-	Green stick	-
Avocado pear	<i>Pear</i>	Guava	-
Ax master	<i>Exmasta bark</i>	Gumbolimbo.....	<i>Birch Bark</i>
Baby's Tears	-	Jack in the bush	-
Banana	-	Hibiscus	-
Basil	<i>Balsley, Barsley</i>	Hog Plum	-
Bay Cedar	-	Dogwood.....	<i>Maybush, Wormwood</i>
Bear Paw Fern	-	Jackass Bitters	-
Bird of Paradise Flower...	<i>Flambeau</i>	John Charles	-
Buttonwood	<i>Spanish elder</i>	Lemon Grass.....	<i>Fever Grass</i>
Calabash Tree	-	Life Everlasting.....	<i>Tree of Life</i>
Cancer herb.....	<i>Cattail</i>	Maiden Head Fern.....	<i>Black stick</i>
Castor bean plant.....	<i>Oil nut</i>	Man vine	-
Cedar	-	Marigold	-
Chachalpec	-	God almighty bush.....	<i>Scorn the earth</i>
Chichibe	-	Mexican heather	-
China root.....	<i>Wild sarsa</i>	Sticky sticky burr burr	-
Cockspur	-	Dysentery bark	-
Coconut	-	Oregano castillo.....	<i>Oregano</i>
Coffee	-	Papaya	-
Contra Hierba	-	Periwinkle.....	<i>Ram goat, All day flower</i>
Contribo.....	<i>Duck flower</i>	Pheasant tail	-
Copal	-	Physic nut	-
Corn, maize	-	Christmas candle.....	<i>Piss a bed</i>
Cowfoot vine	-	Provision bark	-
Creole Gal, Carib Gal.....	<i>Wild coco</i>	Purslane	-
Crepe Myrtle	-	Rabbit's paw.....	<i>Wild Sunflower</i>
Cross Vine.....	<i>Skipping Rope Vine</i>	Red Head.....	<i>Polly red head</i>
Coriander.....	<i>Colantro</i>	Red Mangrove	-
Dog's tongue	-	Red rose	-
Wormseed.....	<i>Mexican weed</i>	Rue	-
		Santa Maria	-

Santa Maria	-	
Santa Maria.....	<i>Cowfoot*</i>	<i>*Pipe 1</i>
Scoggineal	-	<i>(B) enters</i>
Scorpion's tail	-	<i>quietly</i>
Skunk Root.....	<i>Rat Root</i>	<i>and plays</i>
Snake Plant	-	<i>until the</i>
Sorosi	-	<i>Soprano</i>
Sour Orange Tree	-	<i>enters</i>
Stinking Toe	-	
Strong Back	-	
Susumba	-	
Tamarind	-	
Tan Chi	-	
Trumpet Tree	-	
Twelve O'Clock.....	<i>Prickle</i>	
Vervain.....	<i>Vervine</i>	
Wild Coffee	-	
Wild Custard apple	<i>Bullock's Heart</i>	
Wild Pineapple	-	
Wild Poinsettia	-	
Wild Sage	-	
Wild Yam.....	<i>White China Root</i>	
Wire Wis	-	
Yama Bush.....	<i>Rat Bean</i>	

Pimenta gorda	
Almendra	
-	
Quelite	
-	
Achiote	
Aguacate	
Quebracho	
-	
Guineo [<i>* Soprano enters</i>]	
Albahaca	
Tapaculo	
Canawana, Tallawalla	
Flor de la Virgen, Irritacion	
Cordonsillo	
-	
Hierba del cancer	
Higuera. Ricino	
Cedro	
Phosforo	
Escoba, Malva	
-	
Cuerna de vaca	
Coco	
Café	
Consuelda, Hinchazon	
Contribo, Flor de pato	
Copal	
Maiz	
Pata de vaca	
-	
-	
Hierba del pensamiento	
Culantro	
Lengua de perro	
Epazote	
-	

Higuero	
Jengibre	
Escoba	
Palo carbon	
Palo verde	
Guayaba	
Broton, Indio desnudo	
-	
Tulipan	
Jobo	
Jabin, Palo de gusano	
Mano de lagarto, tres puntas	
Hierba Martin	
Zacate limon	
Siempre viva	
Helecho, Palo negro	
Bejuco de hombre	
Flor de Muerto	
Matapalo	
Corriente, Mananito	
Mosote, Pega ropa	
Negrito, Acetuna	
Oregano	
Papaya	
Chata, picaria	
Cola de Faisan	
Pinon	
Hoja de barajas	
Bobo, Santo Domingo, Sapoton	
Verdolaga	
Mano de conejo	
Sanalo-todo	
Mangle colorado	
Rosa	
Ruda	
Pito sico	
Pito sico	

San Dideo	
Nopal, tuna	
Cola de Alacran, Rabomico	
Zorillo	
Culebrilla, Lengua de vaca	
Condiamor	
Naranja agria	
Carqué	
-	
Susumba	
Tamarindo	
Claudiosa	
Warumo	
Dormilon	
Verbena	
Suprecayo	
Anona del Monte	
Pinuela	
Flor de Pascua del Monte	
-	
Barba del Viejo	
Bejuco de alhambre	
Frijolillo	

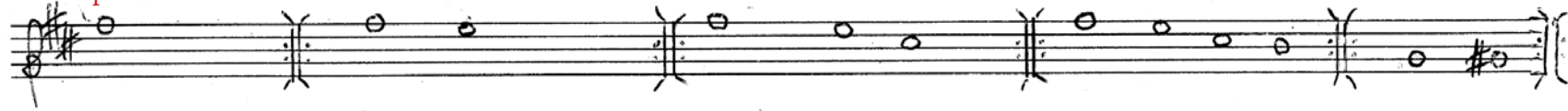
3

Chorus: together on cue, in choral unison, singing on the given B pitch, chant the Spanish text slowly, unhurried, without a clear pulse. Observe breaks (-) as rests/breaths.

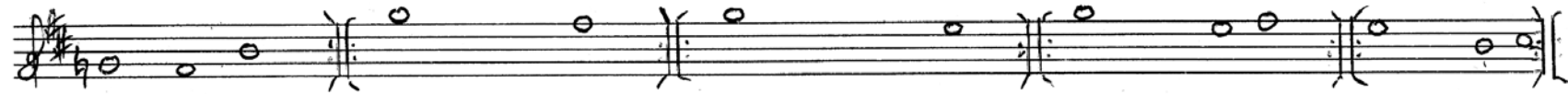
Solo Soprano: see next sheet for Latin chants. Begin at **Guineo***. Text underlay ad lib, chant-like, without measure.

Pipes enter one by one, playing your Pipe in similar word rhythms with many rests. Improvise and explore the timbral possibilities of your instrument. Continue playing for 20" or so after the Soprano finishes; Stop when you hear the Turtle Shell.

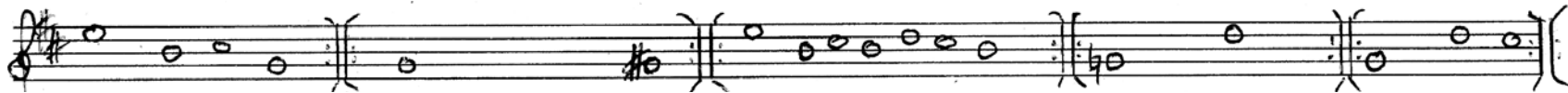
Solo Soprano



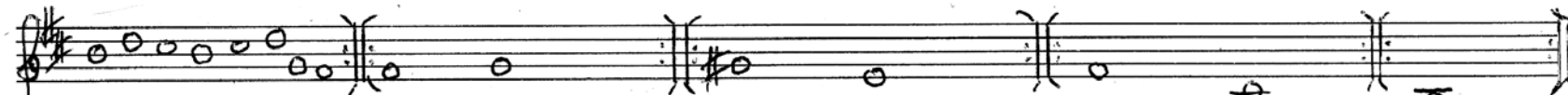
Pimenta dioica	Bixa orellana	Ocimum basilicum	Crescentia cujete	Sida rhombifolia
Terminalia catappa	Persea americana	Guazuma ulmifolia	Acalypha arvensis	Smilax
Aloe vera	Krugiodendron ferreum	Phlebdium decumanum	Ricinus communis	Acacia cornigera
Amaranthus dubius	Phyllanthus liebmannianus	Caesalpina pulcherrima	Cedrela odorata	Cocos nucifera
Psychotria acuminata	Musa acuminata	Piper amalago	Salvia coccinea	Coffea arabica



Syngonium podophyllum	Alocasia macrorrhiza	Chenopodium ambrosoides	Cupania belizensis	Hibiscus rosa-sinensis
Aristolochia trilobata	Lagerstroemia	Vitex gaumeri	Critonia morifolia	Spondius radlkoferi
Protium copal	Paullinia tomentosa	Ficus maxima	Psidium Guajava	Piscidia piscipula
Zea mays	Eryngium foetidum	Zingiber officinale	Bursera Simaruba	Neurolaena lobata
Bauhinia herrerae	Psychotria tenhifolia	Cryosophila stauracantha	Chromolaena odorata	Hyptis verticillata



Cymbopogon citratus	Phoradendron piperoides	Carica papaya	Pachira aquatica	Rosa chinensis
Kalanchoe pinnata	Cuphea calophylla	Catharanthus roseus	Portulaca oleracea	Ruta graveolens
Adiantum tenerum	Priva lappulacea	Anthurium schlechtendalii	Sphagneticola trilobata	Croton
Securidaca diversifolia	Simarouba glauca	Jatropha curcas	Hamelia patens	Pluchea odorata
Tagetes erecta	Lippia graveolens	Senna alata	Rhizophora mangle	Pothomorphe peltata



Opuntia cochenillifera	Citrus aurantium	Capraria biflora	Annona reticulata	Lygodium venestum
Heliotropium indicum	Cassia Grandis	Cecropia peltata	Bromelia pinguin	Senna occidentalis
Chiococca alba	Desmodium adscendens	Mimosa pudica	Euphorbia pulcherrima	
Sansevieria trifasciata	Solanum rudepannum	Stachytarpheta cayennensis	Lantana camara	
Momordica charantia	Tamarindus indica	Malmea depressa	Dioscoria	

4

Turtle Shell: On cue, play steady rhythm throughout, 90 bpm, improv once the pulse is established

Chorus: Pick a favorite name, speak it rhythmically. Repeat/loop the word 10 - 20 times, quietly at first, with the last few repetitions getting as loud as possible. Then pick another and do the same. etc.

- | | | | |
|-------------------|--------------------------|-----------------------|------------------|
| Hibiscus | Banana | Vervain | Red Head |
| Hog Plum | Basil | Wild Coffee | Red Mangrove |
| Dogwood | Bay Cedar | Wild Custard apple | Red rose |
| Jackass Bitters | Bear Paw Fern | Wild Pineapple | Rue |
| John Charles | Bird of Paradise Flower | Wild Poinsettia | Santa Maria |
| Lemon Grass | Buttonwood | Wild Sage | Santa Maria |
| Life Everlasting | Calabash Tree | Allspice | Santa Maria |
| Maiden Head Fern | Cancer herb | Almond | Scoggineal |
| Man vine | Marigold | Aloe vera | Scorpion's tail |
| | God almighty bush | Amaranth, Pig weed | Skunk Root |
| | Mexican heather | Anál | Snake Plant |
| | Sticky sticky burr burr | Annatto | Sorosi |
| | Dysentery bark | Avocado pear | Sour Orange Tree |
| | Oregano castillo | Ax master | Stinking Toe |
| Castor bean plant | Papaya | Baby's Tears | Wild Yam |
| Cedar | Dog's tongue | Contra Hierba | Wire Wis |
| Chachalpec | Wormseed | Contribo | Yama Bush |
| Chichibe | Fiddlewood, Walking Lady | Copal | |
| China root | Fig Tree | Corn, maize | |
| Cockspur | Ginger | Cowfoot vine | |
| Coconut | Give and Take | Creole Gal, Carib gal | |
| Coffee | Grande Betty | Crepe Myrtle | |
| | Green stick | Cross vine | |
| | Guava | Coriander | |
| | Jack in the bush | Strong Back | |
| | | Susumba | |
| | | Tamarind | |
| | | Tan Chi | |
| | | Trumpet Tree | |
| | | Twelve O'Clock | |

5

After approx. 2'00" Maya Trumpet Tree enters with 3 long didjeridu-style drones. Turtle Shell stops.

Chorus: finish your loop and then coalesce onto "Gumbolimbo" together, ff.

Gumbolimbo Gumbolimbo Gumbolimbo

Bamboo Pipe 1(b) plays long tone to give pitch for "Amen".

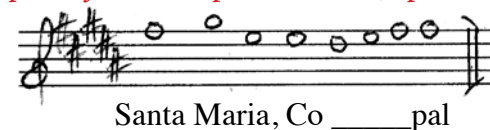
Chorus cuts off at the sound of the pipe (watch for cue)

Chorus: On cue, re-enter, mf, singing "Copal" to the notes of "Amen" (plagal cadence). Do not coordinate the notes or resolve the cadence.

Zingers: play to end, do not process out, get sparser as Chorus fades



Solo Soprano joins in, repeat to the end, processing



Chorus: Process in a circle and walk offstage singing, to silence